

# Santana do Cariri, Ceará, Brazil

## Plants of Palm Swamps in the South of Ceará

Maria Daniely Freire Guerra<sup>1</sup>, Priscila Orlandini<sup>2</sup>, Rayane de Tasso Moreira Ribeiro<sup>3</sup>, Maria Iracema Bezerra de Lioila<sup>4</sup>  
& Rubens Teixeira de Queiroz<sup>5</sup>

<sup>1</sup>Universidade Regional do Cariri, <sup>2</sup>Universidade Estadual de Campinas, <sup>3</sup>Universidade Federal Rural de Pernambuco,  
<sup>4</sup>Universidade Federal do Ceará & <sup>5</sup>Universidade Federal da Paraíba

Photos by R.T. de Queiroz, M.I.B. Lioila, and M.D.F. Guerra. Produced by M.D.F. Guerra, and Priscila Orlandini. For more information: Guerra et al. (2020).



©Field Museum (2021) CC BY-NC 4.0. Licensed works are free to use/share/remix with attribution, but commercial use of the original work is not permitted.

[fieldguides.fieldmuseum.org]

[1363] version 1 9/2021



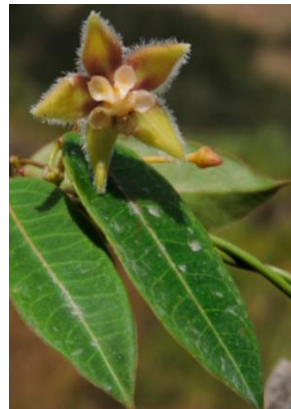
Palm swamps are typical environment of the Cerrado domain. However, they also occur in ecological refugia, in isolated stretches of drainage headwaters in the Araripe sedimentar basin, in the South of Ceará state. These lie inside the drought polygon of the northeastern Brazil, where the xerophytic Caatinga vegetation predominates. These refugia betray a complex paleoclimatic and paleoecological evolution, being maintained by local particularities, and favored by the perennial water supply from seepage zones fed by the suspended aquifer of Araripe Plateau. This context allows the coexistence and coevolution of the palm swamp within an area of climatic semiaridity. This guide provides information regarding the recognition and identification of typical species of palm swamp, which were cataloged in a refugium area, locally called the Buriti Valley, in the township of Santana do Cariri, state of Ceará.



1 *Mendoncia* sp.  
ACANTHACEAE



2 *Ruellia inundata*  
ACANTHACEAE



3 *Blepharodon pictum*  
APOCYNACEAE



4 *Acrocomia intumescens*  
ARECACEAE



5 *Attalea speciosa*  
ARECACEAE



# Plants of Palm Swamps in the South of Ceará

Maria Daniely Freire Guerra<sup>1</sup>, Priscila Orlandini<sup>2</sup>, Rayane de Tasso Moreira Ribeiro<sup>3</sup>, Maria Iracema Bezerra de Loiola<sup>4</sup>  
& Rubens Teixeira de Queiroz<sup>5</sup>

<sup>1</sup>Universidade Regional do Cariri, <sup>2</sup>Universidade Estadual de Campinas, <sup>3</sup>Universidade Federal Rural de Pernambuco,  
<sup>4</sup>Universidade Federal do Ceará & <sup>5</sup>Universidade Federal da Paraíba

Photos by R.T. de Queiroz, M.I.B. Loiola, and M.D.F. Guerra. Produced by M.D.F. Guerra, and Priscila Orlandini. For more information: Guerra et al. (2020).



©Field Museum (2021) CC BY-NC 4.0. Licensed works are free to use/share/remix with attribution, but commercial use of the original work is not permitted.

[fieldguides.fieldmuseum.org]

[1363] version 1 9/2021



6 *Attalea speciosa*  
ARECACEAE



7 *Mauritia flexuosa*  
ARECACEAE



8 *Mauritia flexuosa*  
ARECACEAE



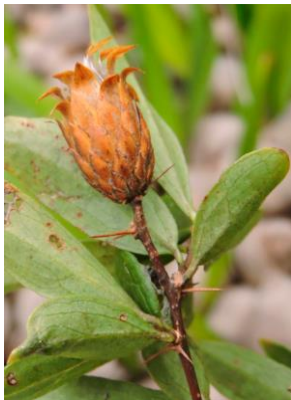
9 *Aristolochia papillaris*  
ARISTOLOCHIACEAE



10 *Achyrocline saturejoides*  
ASTERACEAE



11 *Dasyphyllum spregelianum*  
ASTERACEAE



12 *Dasyphyllum spregelianum*  
ASTERACEAE



13 *Delilia biflora*  
ASTERACEAE



14 *Dissothrix* sp.  
ASTERACEAE



15 *Pectis gardneri*  
ASTERACEAE



16 *Garcinia gardneriana*  
CLUSIACEAE



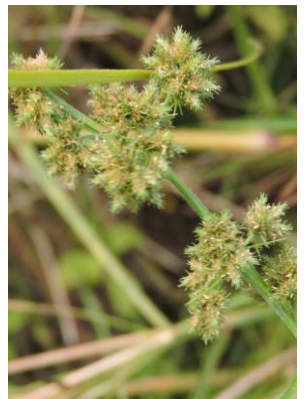
17 *Floscopa glabrata*  
COMMELINACEAE



18 *Cyathea delgadoi*  
CYATHEACEAE



19 *Cyperus odoratus*  
CYPERACEAE



20 *Fuirena lainzii*  
CYPERACEAE



# Plants of Palm Swamps in the South of Ceará

Maria Daniely Freire Guerra<sup>1</sup>, Priscila Orlandini<sup>2</sup>, Rayane de Tasso Moreira Ribeiro<sup>3</sup>, Maria Iracema Bezerra de Loiola<sup>4</sup>  
& Rubens Teixeira de Queiroz<sup>5</sup>

<sup>1</sup>Universidade Regional do Cariri, <sup>2</sup>Universidade Estadual de Campinas, <sup>3</sup>Universidade Federal Rural de Pernambuco,  
<sup>4</sup>Universidade Federal do Ceará & <sup>5</sup>Universidade Federal da Paraíba

Photos by R.T. de Queiroz, M.I.B. Loiola, and M.D.F. Guerra. Produced by M.D.F. Guerra, and Priscila Orlandini. For more information: Guerra et al. (2020).



©Field Museum (2021) CC BY-NC 4.0. Licensed works are free to use/share/remix with attribution, but commercial use of the original work is not permitted.

[fieldguides.fieldmuseum.org]

[1363] version 1 9/2021



21 *Rhynchospora latifolia*  
CYPERACEAE



22 *Rhynchospora riparia*  
CYPERACEAE



23 *Aeschynomene sensitiva*  
FABACEAE



24 *Aeschynomene sensitiva*  
FABACEAE



25 *Aeschynomene sensitiva*  
FABACEAE



26 *Bauhinia unguolata*  
FABACEAE



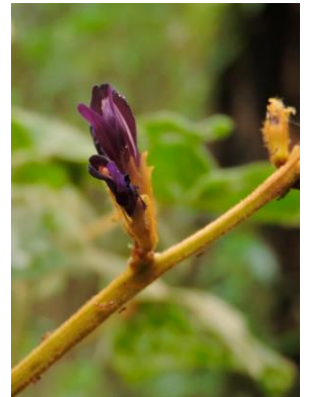
27 *Bauhinia unguolata*  
FABACEAE



28 *Calopogonium mucunoides*  
FABACEAE



29 *Calopogonium velutinum*  
FABACEAE



30 *Calopogonium velutinum*  
FABACEAE



31 *Calopogonium velutinum*  
FABACEAE



32 *Centrosema sagittatum*  
FABACEAE



33 *Chamaecrista nictitans*  
FABACEAE



34 *Chamaecrista pilosa*  
FABACEAE



35 *Clitoria falcata*  
FABACEAE



# Plants of Palm Swamps in the South of Ceará

Maria Daniely Freire Guerra<sup>1</sup>, Priscila Orlandini<sup>2</sup>, Rayane de Tasso Moreira Ribeiro<sup>3</sup>, Maria Iracema Bezerra de Loiola<sup>4</sup>  
& Rubens Teixeira de Queiroz<sup>5</sup>

<sup>1</sup>Universidade Regional do Cariri, <sup>2</sup>Universidade Estadual de Campinas, <sup>3</sup>Universidade Federal Rural de Pernambuco,  
<sup>4</sup>Universidade Federal do Ceará & <sup>5</sup>Universidade Federal da Paraíba

Photos by R.T. de Queiroz, M.I.B. Loiola, and M.D.F. Guerra. Produced by M.D.F. Guerra, and Priscila Orlandini. For more information: Guerra et al. (2020).



©Field Museum (2021) CC BY-NC 4.0. Licensed works are free to use/share/remix with attribution, but commercial use of the original work is not permitted.

[fieldguides.fieldmuseum.org]

[1363] version 1 9/2021



36 *Ctenodon histrix*  
FABACEAE



37 *Ctenodon paniculatus*  
FABACEAE



38 *Ctenodon viscidulus*  
FABACEAE



39 *Desmodium barbatum*  
FABACEAE



40 *Desmodium distortum*  
FABACEAE



41 *Desmodium distortum*  
FABACEAE



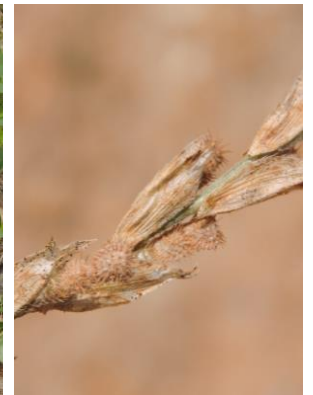
42 *Desmodium distortum*  
FABACEAE



43 *Macropsyчанthus sclerocarpus*  
FABACEAE



44 *Mimosa ursina*  
FABACEAE



45 *Zornia latifolia*  
FABACEAE



46 *Zornia reticulata*  
FABACEAE



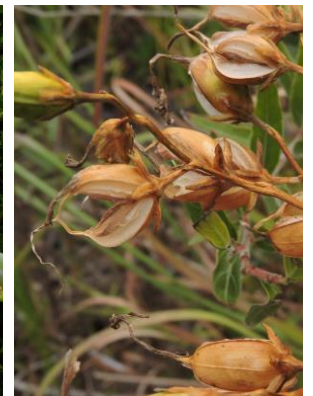
47 *Dicranopteris flexuosa*  
GLEICHENIACEAE



48 *Dicranopteris flexuosa*  
GLEICHENIACEAE



49 *Chelonanthus purpurascens*  
GENTIANACEAE



50 *Chelonanthus purpurascens*  
GENTIANACEAE



# Plants of Palm Swamps in the South of Ceará

Maria Daniely Freire Guerra<sup>1</sup>, Priscila Orlandini<sup>2</sup>, Rayane de Tasso Moreira Ribeiro<sup>3</sup>, Maria Iracema Bezerra de Loiola<sup>4</sup>  
& Rubens Teixeira de Queiroz<sup>5</sup>

<sup>1</sup>Universidade Regional do Cariri, <sup>2</sup>Universidade Estadual de Campinas, <sup>3</sup>Universidade Federal Rural de Pernambuco,  
<sup>4</sup>Universidade Federal do Ceará & <sup>5</sup>Universidade Federal da Paraíba

Photos by R.T. de Queiroz, M.I.B. Loiola, and M.D.F. Guerra. Produced by M.D.F. Guerra, and Priscila Orlandini. For more information: Guerra et al. (2020).



©Field Museum (2021) CC BY-NC 4.0. Licensed works are free to use/share/remix with attribution, but commercial use of the original work is not permitted.

[fieldguides.fieldmuseum.org]

[1363] version 1 9/2021



51 *Schultesia guianensis*  
GENTIANACEAE



52 *Sinningia elatior*  
GESNERIACEAE



53 *Sinningia elatior*  
GESNERIACEAE



54 *Hyptis lanceolata*  
LAMIACEAE



55 *Vitex rufescens*  
LAMIACEAE



56 *Ocotea nitida*  
LAURACEAE



57 *Utricularia* sp.  
LENTIBULARIACEAE



58 *Lycopodiella alopecuroides*  
LYCOPODIACEAE



59 *Lygodium venustum*  
LYGODIACEAE



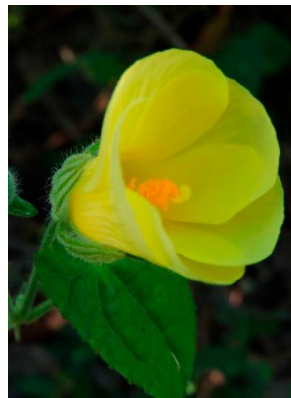
60 *Lygodium venustum*  
LYGODIACEAE



61 *Herisanthia nemoralis*  
MALVACEAE



62 *Herisanthia nemoralis*  
MALVACEAE



63 *Pavonia humifusa*  
MALVACEAE



64 *Pavonia malacophylla*  
MALVACEAE



65 *Triumfetta semitriloba*  
MALVACEAE



# Plants of Palm Swamps in the South of Ceará

Maria Daniely Freire Guerra<sup>1</sup>, Priscila Orlandini<sup>2</sup>, Rayane de Tasso Moreira Ribeiro<sup>3</sup>, Maria Iracema Bezerra de Loliola<sup>4</sup>  
& Rubens Teixeira de Queiroz<sup>5</sup>

<sup>1</sup>Universidade Regional do Cariri, <sup>2</sup>Universidade Estadual de Campinas, <sup>3</sup>Universidade Federal Rural de Pernambuco,  
<sup>4</sup>Universidade Federal do Ceará & <sup>5</sup>Universidade Federal da Paraíba

Photos by R.T. de Queiroz, M.I.B. Loliola, and M.D.F. Guerra. Produced by M.D.F. Guerra, and Priscila Orlandini. For more information: Guerra et al. (2020).



©Field Museum (2021) CC BY-NC 4.0. Licensed works are free to use/share/remix with attribution, but commercial use of the original work is not permitted.

[fieldguides.fieldmuseum.org]

[1363] version 1 9/2021



66 *Urena lobata*  
MALVACEAE



67 *Urena lobata*  
MALVACEAE



68 *Waltheria viscosissima*  
MALVACEAE



69 *Clidemia biserrata*  
MELASTOMATACEAE



70 *Pterolepis glomerata*  
MELASTOMATACEAE



71 *Sauvagesia erecta*  
ONCHACEAE



72 *Ludwigia erecta*  
ONAGRACEAE



73 *Ludwigia nervosa*  
ONAGRACEAE



74 *Ludwigia nervosa*  
ONAGRACEAE



75 *Piper aduncum*  
PIPERACEAE



76 *Angelonia biflora*  
PLANTAGINACEAE



77 *Angelonia pubescens*  
PLANTAGINACEAE



78 *Anthephora hermaphrodita*  
POACEAE



79 *Melinis minutiflora*  
POACEAE



80 *Bredemeyera floribunda*  
POLYGALACEAE



## Santana do Cariri, Ceará, Brazil

## Plants of Palm Swamps in the South of Ceará

Maria Daniely Freire Guerra<sup>1</sup>, Priscila Orlandini<sup>2</sup>, Rayane de Tasso Moreira Ribeiro<sup>3</sup>, Maria Iracema Bezerra de Loiola<sup>4</sup>  
& Rubens Teixeira de Queiroz<sup>5</sup>

<sup>1</sup>Universidade Regional do Cariri, <sup>2</sup>Universidade Estadual de Campinas, <sup>3</sup>Universidade Federal Rural de Pernambuco,  
<sup>4</sup>Universidade Federal do Ceará & <sup>5</sup>Universidade Federal da Paraíba

Photos by R.T. de Queiroz, M.I.B. Loiola, and M.D.F. Guerra. Produced by M.D.F. Guerra, and Priscila Orlandini. For more information: Guerra et al. (2020).



©Field Museum (2021) CC BY-NC 4.0. Licensed works are free to use/share/remix with attribution, but commercial use of the original work is not permitted.

[fieldguides.fieldmuseum.org]

[1363] version 1 9/2021



81 *Xylosma ciliatifolia*  
SALICACEAE



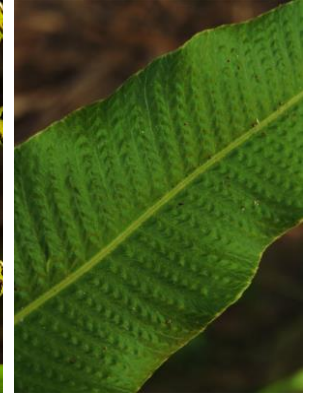
82 *Paullinia pinnata*  
SAPINDACEAE



83 *Schwentkia mollissima*  
SOLANACEAE



84 *Thelypteris interrupta*  
THELYPTERIDACEAE



85 *Thelypteris serrata*  
THELYPTERIDACEAE



86 *Thelypteris serrata*  
THELYPTERIDACEAE



87 *Piriqueta sidifolia*  
TURNERACEAE



88 *Piriqueta sidifolia*  
TURNERACEAE



89 *Cecropia pachystachya*  
URTICACEAE



90 *Xyris macrocephala*  
XYRIDACEAE



## Santana do Cariri, Ceará, Brazil

## Plants of Palm Swamps in the South of Ceará

Maria Daniely Freire Guerra<sup>1</sup>, Priscila Orlandini<sup>2</sup>, Rayane de Tasso Moreira Ribeiro<sup>3</sup>, Maria Iracema Bezerra de Lioila<sup>4</sup>  
& Rubens Teixeira de Queiroz<sup>5</sup>

<sup>1</sup>Universidade Regional do Cariri, <sup>2</sup>Universidade Estadual de Campinas, <sup>3</sup>Universidade Federal Rural de Pernambuco,

<sup>4</sup>Universidade Federal do Ceará & <sup>5</sup>Universidade Federal da Paraíba

Photos by R.T. de Queiroz, M.I.B. Lioila, and M.D.F. Guerra. Produced by M.D.F. Guerra, and Priscila Orlandini. For more information: Guerra et al. (2020).



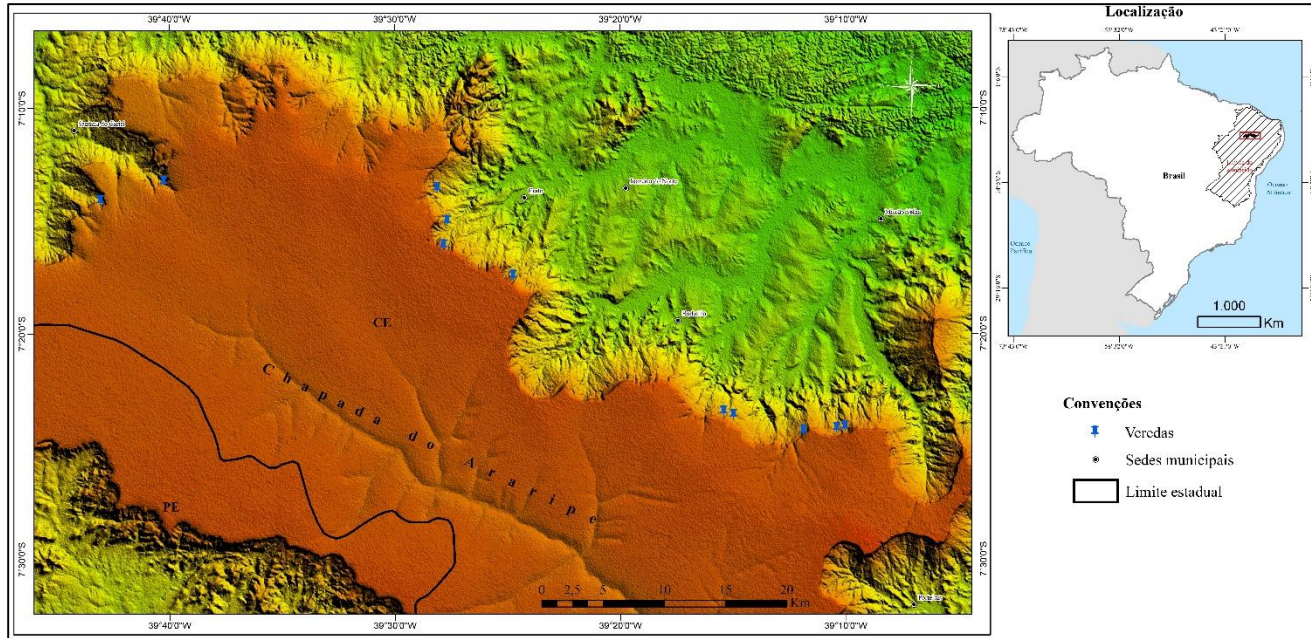
©Field Museum (2021) CC BY-NC 4.0. Licensed works are free to use/share/remix with attribution, but commercial use of the original work is not permitted.

[fieldguides.fieldmuseum.org]

[1363]

version 1

9/2021



Location of isolated palm swamp in selective points of the slope and foothills of the Araripe Plateau



Physiognomy of the palm swamp of the Vale do Buriti, township Santana do Cariri, Ceará, Brazil